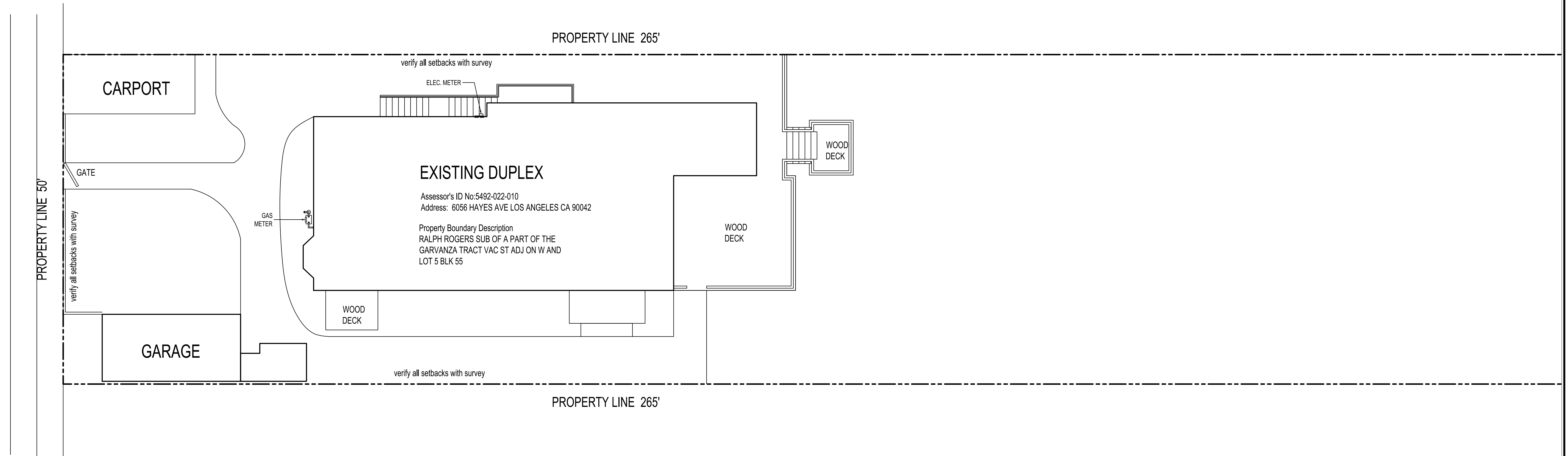
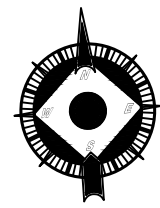
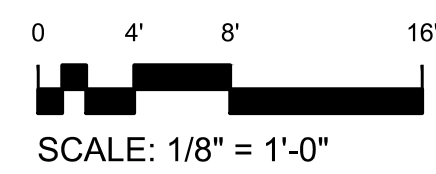


HAYES AVE



Assessor's ID No: 5492-022-010  
 Address: 6056 HAYES AVE LOS ANGELES CA 90042  
 Property Boundary Description  
 RALPH ROGERS SUB OF A PART OF THE  
 GARVANZA TRACT VAC ST ADJ ON W AND  
 LOT 5 BLK 55

PLOT PLAN



REVISIONS	BY

**AS-BUILT**  
LOS ANGELES

Sheet content :  
PLOT PLAN

Project :  
6056-6058 HAYES AVE  
LOS ANGELES CA 90042

Owner:

Date

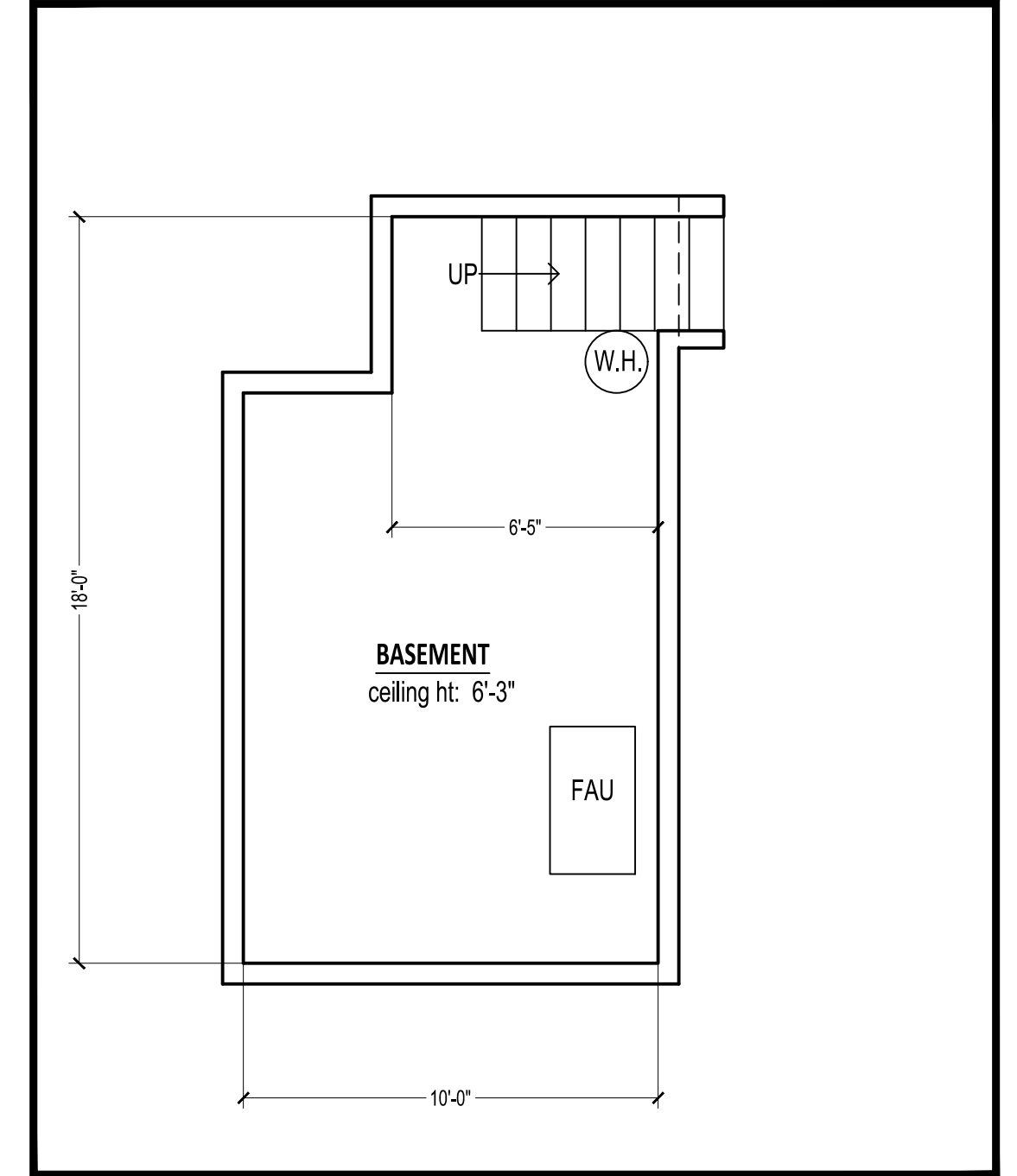
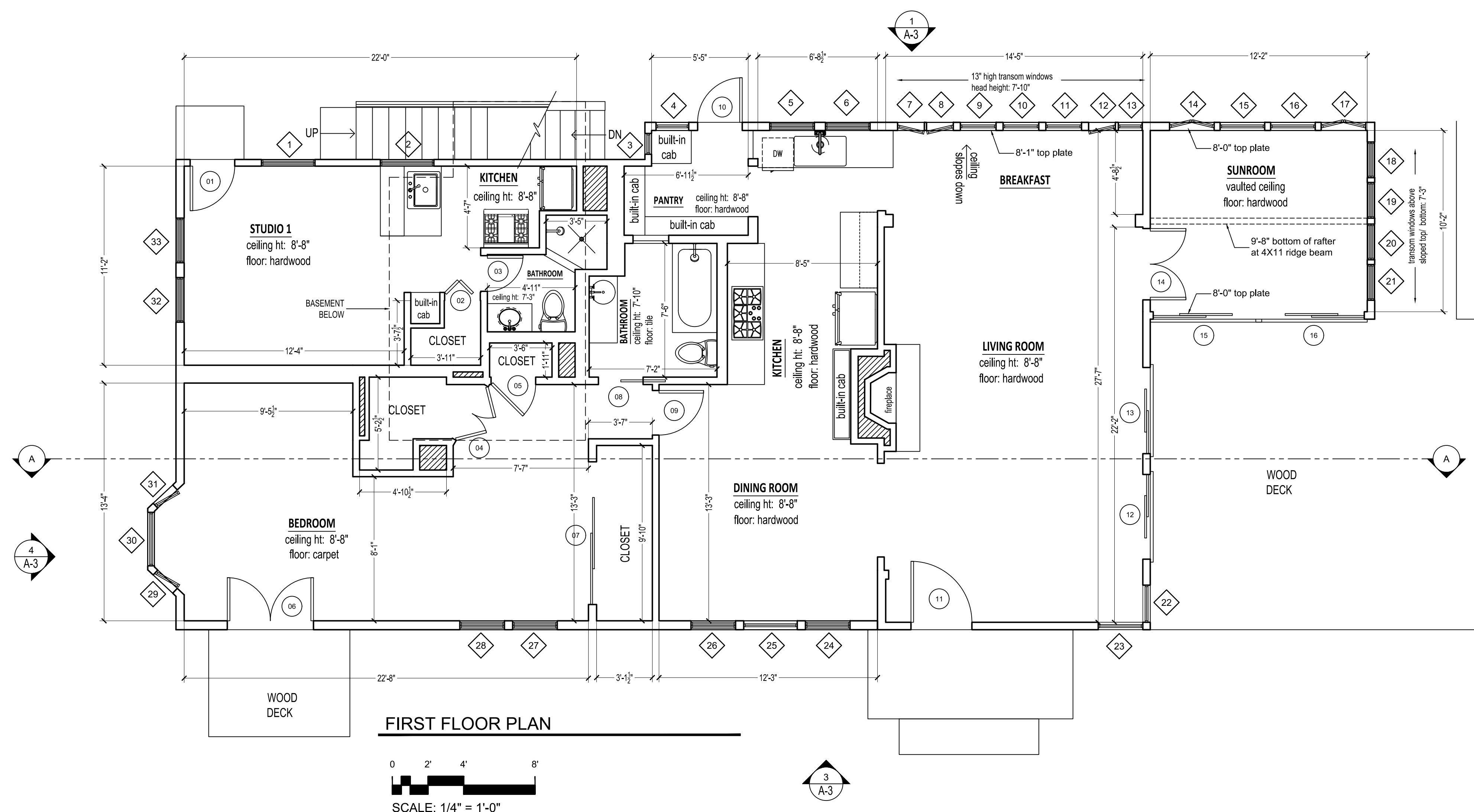
Scale

Drawn

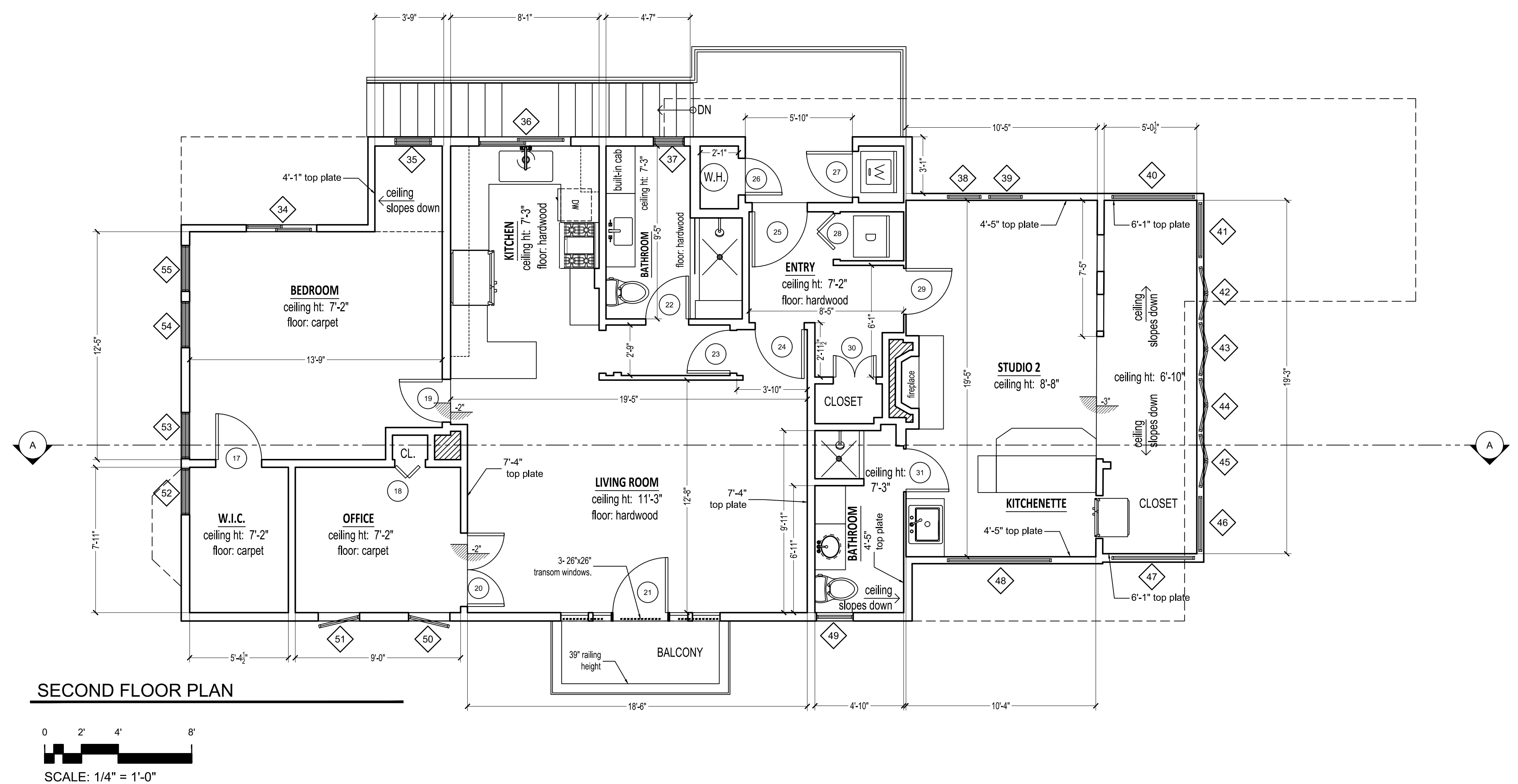
Job

Sheet

**A-1**



Sheet content:  
**FLOOR PLAN**



**DOOR SCHEDULE**

MARK	SIZE		Type	NOTES
	WD	HGT		
1	2'-6"	6'-8"	SWING	---
2	2'-0"	6'-8"	BI-FOLD	---
3	2'-0"	6'-8"	SWING	---
4	3'-6"	6'-8"	SWING DOUBLE	---
5	2'-6"	6'-8"	SWING	---
6	4'-10"	6'-8"	FRENCH DOUBLE	---
7	8'-0"	6'-8"	SLIDING - DOUBLE	---
8	2'-6"	6'-8"	POCKET	---
9	2'-8"	6'-8"	SWING	---
10	2'-6"	6'-8"	FRENCH	---
11	3'-5"	6'-8"	SWING	---
12	4'-9"	6'-8"	SLIDING DOUBLE	---
13	4'-10"	6'-8"	SLIDING DOUBLE	---
14	4'-0"	6'-8"	FRENCH DOUBLE	---
15	5'-11"	6'-8"	SLIDING DOUBLE	---
16	5'-11"	6'-8"	SLIDING DOUBLE	---
17	2'-6"	6'-8"	SWING	---
18	1'-8"	6'-8"	BI-FOLD	---
19	2'-4"	6'-8"	SWING	---
20	4'-0"	6'-8"	SWING DOUBLE	---
21	3'-0"	6'-8"	FRENCH	---
22	2'-4"	6'-8"	SWING	---
23	2'-4"	6'-8"	SWING	---
24	2'-8"	6'-8"	SWING	---
25	3'-0"	6'-8"	SWING	---
26	2'-0"	6'-8"	SWING	---
27	2'-8"	6'-8"	SWING	---
28	2'-6"	6'-8"	BI-FOLD	---
29	2'-6"	6'-8"	SWING	---
30	2'-4"	6'-8"	SWING DOUBLE	---
31	2'-4"	6'-8"	SWING	---

**WINDOW SCHEDULE**

MARK	SIZE		TYPE	Head Height	NOTES
	Width	HEIGHT			
1	3'-0"	4'-6"	SINGLE HUNG	6'-8"	---
2	3'-0"	3'-6"	SINGLE HUNG	6'-8"	---
3	1'-2"	3'-11"	FIXED	6'-8"	---
4	1'-10"	3'-11"	FIXED	6'-8"	---
5	2'-6"	4'-6"	SINGLE HUNG	6'-8"	---
6	2'-6"	4'-6"	SINGLE HUNG	6'-8"	---
7	1'-6"	3'-6"	CASEMENT	6'-8"	---
8	1'-6"	3'-6"	CASEMENT	6'-8"	---
9	2'-0"	3'-6"	FIXED	6'-8"	---
10	2'-0"	3'-6"	FIXED	6'-8"	---
11	2'-0"	3'-6"	FIXED	6'-8"	---
12	1'-6"	3'-6"	CASEMENT	6'-8"	---
13	1'-4"	3'-6"	FIXED	6'-8"	---
14	2'-6"	4'-0"	DOUBLE CASEMENT	6'-8"	---
15	2'-6"	4'-0"	FIXED	6'-8"	---
16	2'-6"	4'-0"	FIXED	6'-8"	---
17	2'-6"	4'-0"	DOUBLE CASEMENT	6'-8"	---
18	2'-0"	4'-0"	SINGLE HUNG	6'-8"	---
19	2'-0"	4'-0"	SINGLE HUNG	6'-8"	---
20	2'-0"	4'-0"	SINGLE HUNG	6'-8"	---
21	2'-0"	4'-0"	SINGLE HUNG	6'-8"	---
22	2'-1"	6'-8"	FIXED	6'-8"	---
23	2'-0"	6'-8"	FIXED	6'-8"	---
24	2'-6"	4'-6"	SINGLE HUNG	6'-8"	---
25	3'-0"	4'-6"	FIXED	6'-8"	---
26	2'-6"	4'-6"	SINGLE HUNG	6'-8"	---
27	2'-6"	4'-6"	SINGLE HUNG	6'-8"	---
28	2'-6"	4'-6"	SINGLE HUNG	6'-8"	---
29	1'-6"	4'-6"	CASEMENT	6'-8"	---
30	3'-0"	4'-6"	FIXED	6'-8"	---
31	1'-6"	4'-6"	CASEMENT	6'-8"	---
32	2'-6"	4'-6"	SINGLE HUNG	6'-8"	---
33	2'-6"	4'-6"	SINGLE HUNG	6'-8"	---
34	3'-10"	1'-9"	SLIDING	6'-5"	---
35	2'-0"	3'-0"	SINGLE HUNG	4'-0"	---
36	5'-0"	2'-6"	SLIDING	6'-8"	---
37	1'-8"	2'-10"	SINGLE HUNG	6'-8"	---
38	1'-10"	2'-4"	CASEMENT	3'-9"	---
39	1'-10"	2'-4"	CASEMENT	3'-9"	---
40	4'-6"	4'-6"	FIXED	5'-9"	---
41	3'-0"	4'-6"	FIXED	5'-9"	---
42	2'-11"	4'-5"	DOUBLE CASEMENT	5'-9"	---
43	2'-11"	4'-5"	DOUBLE CASEMENT	5'-9"	---
44	2'-11"	4'-5"	DOUBLE CASEMENT	5'-9"	---
45	2'-11"	4'-5"	DOUBLE CASEMENT	5'-9"	---
46	3'-0"	4'-6"	FIXED	5'-9"	---
47	4'-6"	4'-6"	FIXED	5'-9"	---
48	5'-8"	2'-0"	AWNING	3'-6"	---
49	2'-0"	1'-8"	CASEMENT	6'-8"	---
50	2'-3"	2'-5"	CASEMENT	6'-8"	---
51	2'-3"	2'-5"	CASEMENT	6'-8"	---
52	2'-6"	4'-0"	SINGLE HUNG	6'-5"	---
53	2'-6"	4'-0"	SINGLE HUNG	6'-5"	---
54	2'-6"	4'-0"	SINGLE HUNG	6'-5"	---
55	2'-6"	4'-0"	SINGLE HUNG	6'-5"	---

Project:  
**6056-6058 HAYES AVE  
LOS ANGELES CA 90042**

Owner:  
Date  
Scale  
Drawn  
Job  
Sheet



1 N. ELEVATION

0 2' 4' 8'

SCALE: 1/4" = 1'-0"



3 S. ELEVATION

0 2' 4' 8'

SCALE: 1/4" = 1'-0"



2 E. ELEVATION

0 2' 4' 8'

SCALE: 1/4" = 1'-0"



4 W. ELEVATION  
0 2' 4' 8'  
SCALE: 1/4" = 1'-0"



SECTION A-A  
0 2' 4' 8'  
SCALE: 1/4" = 1'-0"

REVISIONS	BY

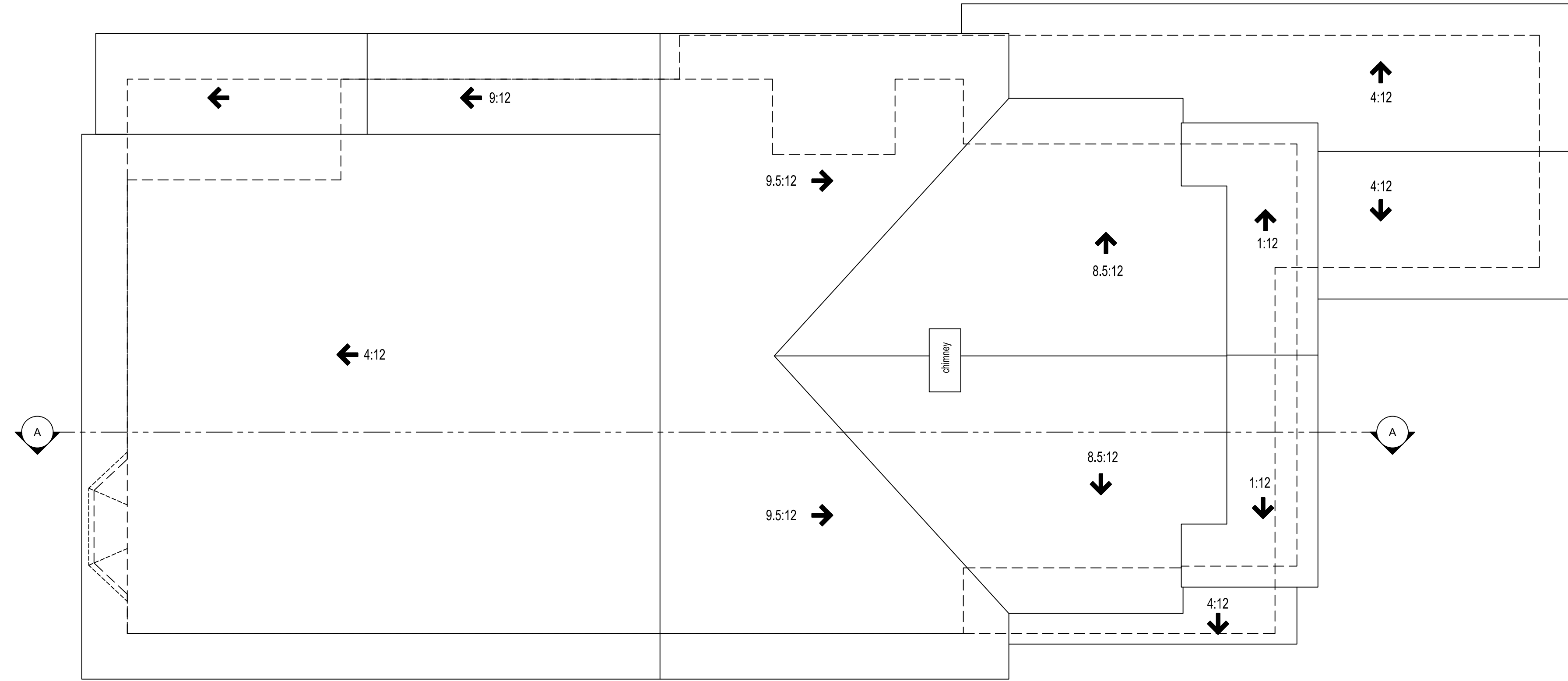
**AS-BUILT**  
LOS ANGELES

Sheet content :  
**ROOF PLAN**

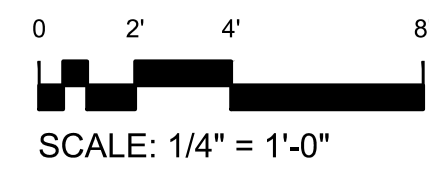
Project :  
6056-6058 HAYES AVE  
LOS ANGELES CA 90042

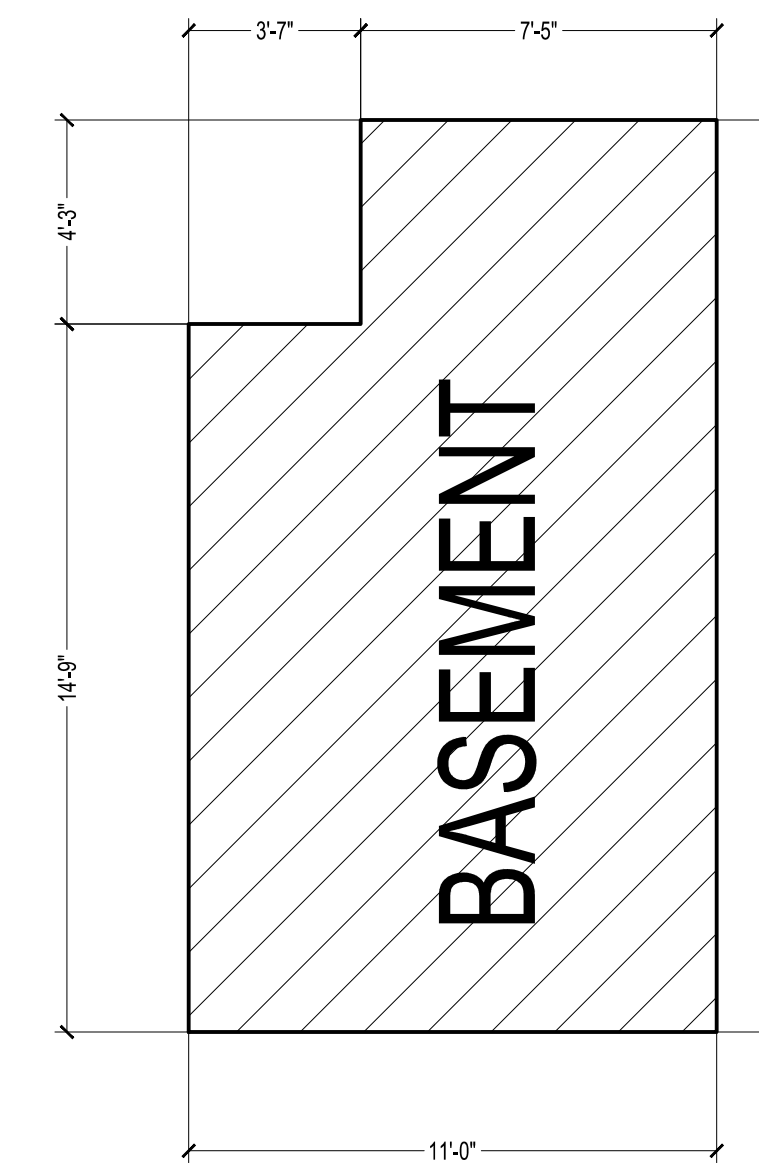
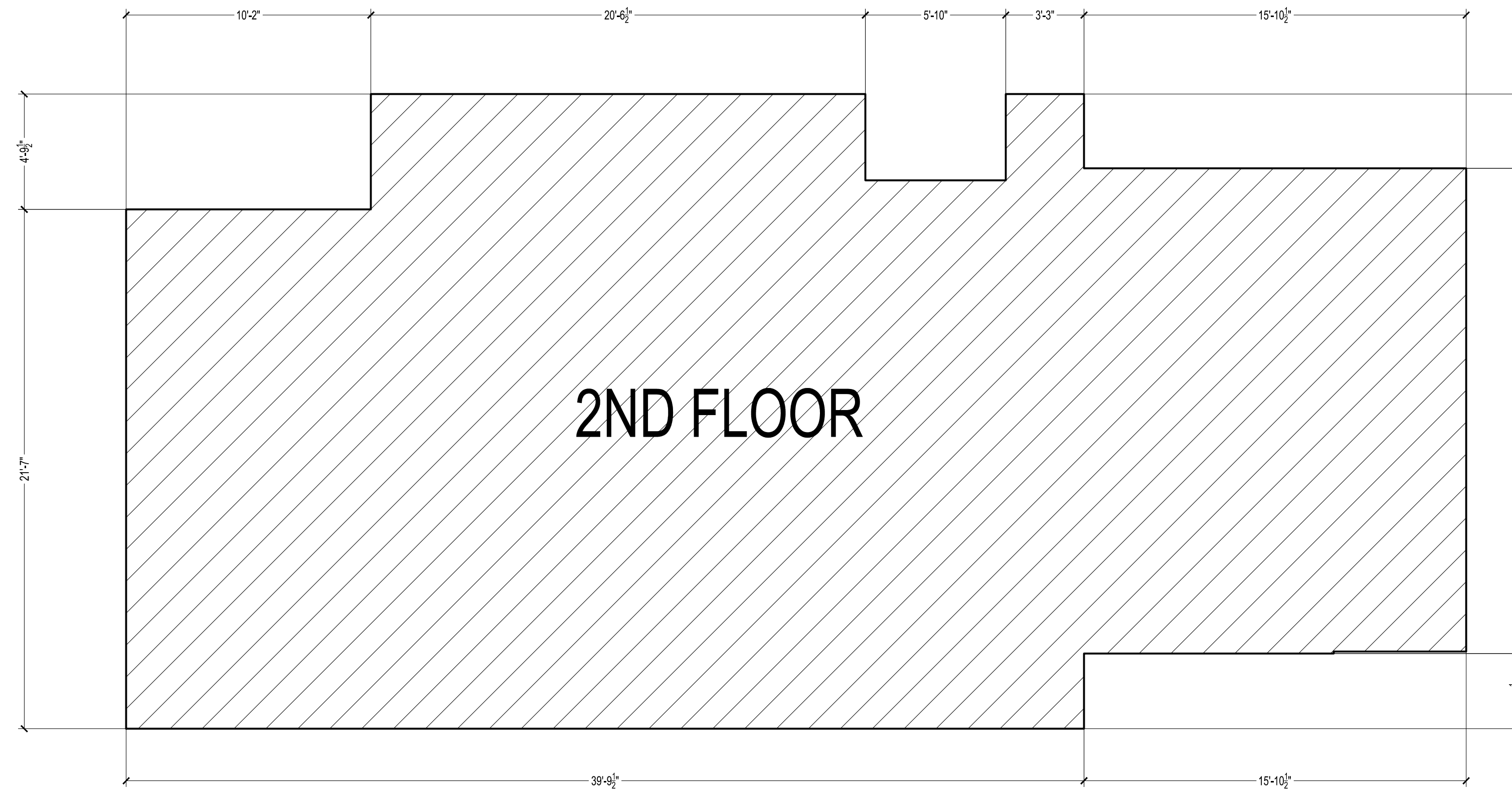
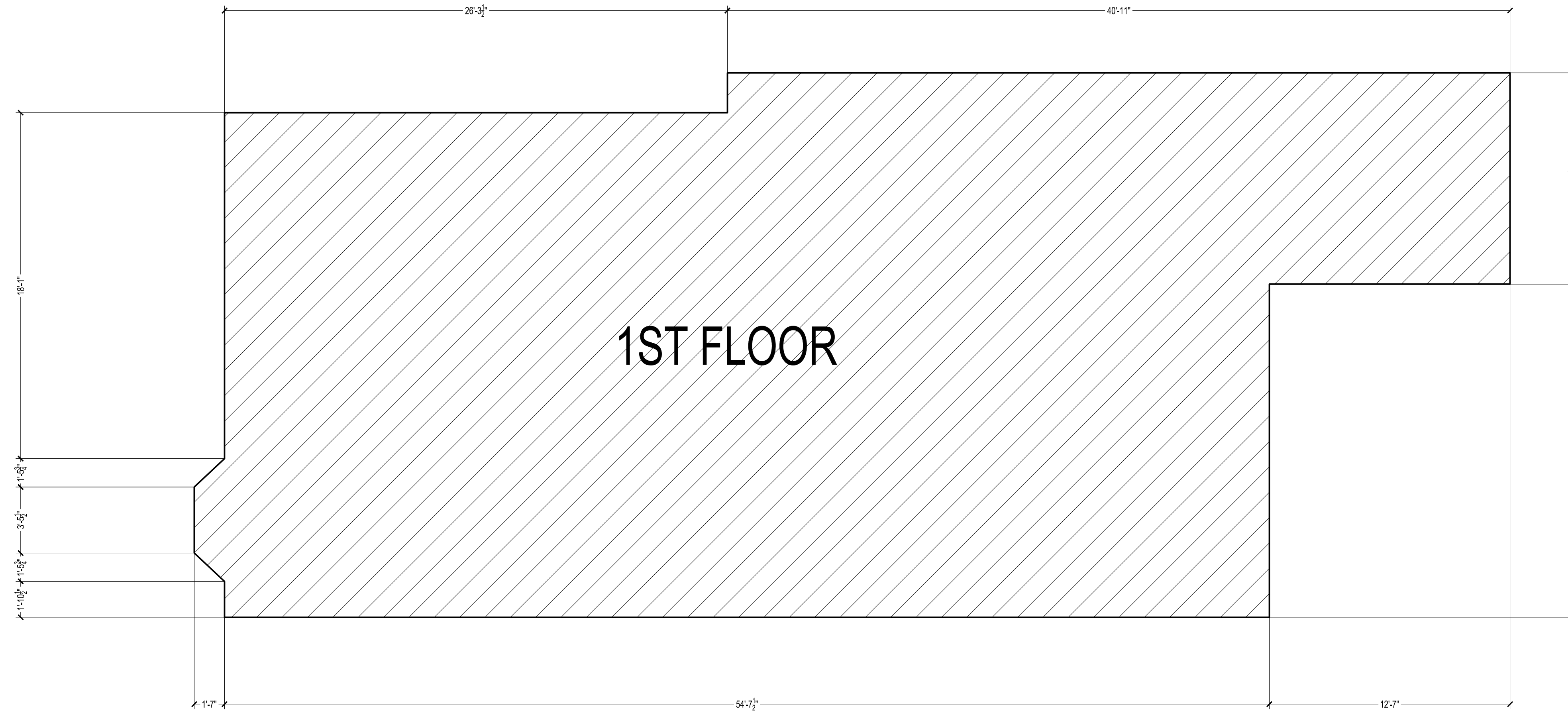
Owner:  
Date  
Scale  
Drawn  
Job  
Sheet

**A-5**



**ROOF PLAN**





SQUARE FOOTAGE  
 FIRST FLOOR: 1646 SF  
 SECOND FLOOR: 1300 SF  
 BASEMENT: 194 SF  
 TOTAL: 3,140 SF

REVISIONS	BY
<b>AS-BUILT</b> LOS ANGELES	
Sheet content : SQUARE FOOTAGE CALCULATION	
Project : 6056-6058 HAYES AVE LOS ANGELES CA 90042	
Owner:	
Date	
Scale	
Drawn	
Job	
Sheet	
<b>A-6</b>	